

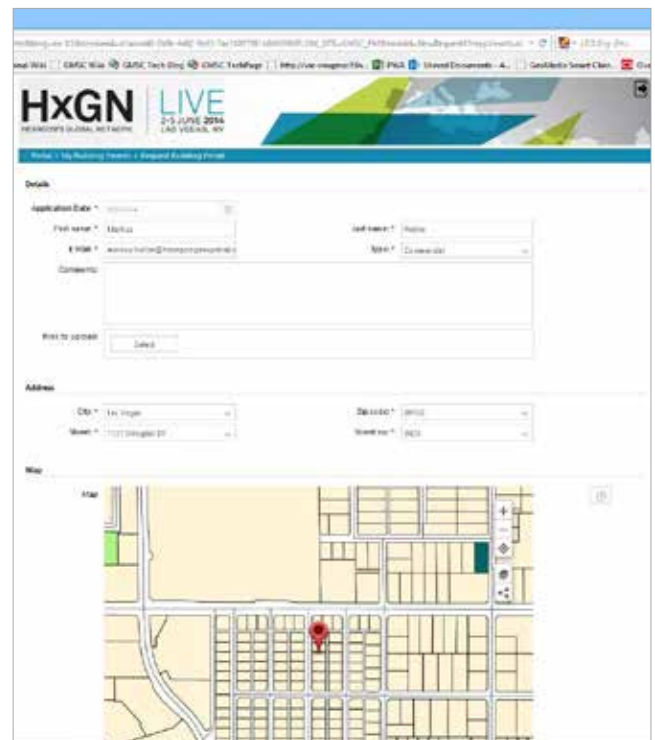


WORKFLOW MANAGER

Workflow Manager is a standalone product and a rich toolset that lets you construct highly-focused business workflows that primarily support attributive data, but also may contain a spatial component. Provide the means for third parties, contractors, and even the public to make use of task-specific, specialized processes that tie back to your enterprise operations. These optimized form-based workflows can be made available in the browser and through Geospatial Portal.

KEY FEATURES

- **Deep functionality for streamlined workflows** - A powerhouse, XML-based tool, Workflow Manager enables rapid deployment of interfaces that support very specific and streamlined geospatial workflows. Define simple forms for easy user engagement, including queries, analysis, editing and reports. Plus, create workflow steps and forms based on user- and rights-management, with support for automatic validations and conditions for each workflow node.
- **Two powerful options** - Workflow Manager is available in two levels – Runtime and Full. Runtime enables customers to utilize pre-defined business workflows. Full is the higher tier and enables customers to create their own workflows or modify existing ones, themselves. A 3-day training course is available to teach experts at the organization how to make new workflows or modify existing ones.
- **No programming skills required** – Most optimized attribute-based workflows can be created easily by users without a programming background. Typically, a customer-relevant workflow is built together in a single training session, giving participants the right skills to later update or build their own processes.



- **Version independent interface** – Update and extend add-on products without the need to recompile or modify workflows. The Workflow Manager interface is independent of other products (for example GeoMedia Smart Client, Geospatial Portal). As a result, configured XML files will still be valid even if the underlying software gets updated.

- **Supports rapid application development** - Solutions based on Workflow Manager are easy to customize without the need to recompile and redeploy. Update the XML real time and get immediate results. For example, add additional form fields (e.g. adding a date picker to define the start date of an action), save, and immediately demonstrate the result.

| GEOMEDIA SMART CLIENT VS. WORKFLOW MANAGER | | |
|--|---|---|
| | GEOMEDIA SMART CLIENT | WORKFLOW MANAGER |
| DESCRIPTION | Web-based solution for easy implementation of enterprise geospatial business workflows; Java-based front end client supports high-end vector data capture, analysis, printing | Rich toolset to construct highly-focused, attribute-based processes that can be made available in the browser |
| MAIN USE CASE | Main use case is geospatial workflows | Main use case is attributive workflows |
| PRODUCT COMPOSITION | Workflow Manager is a component of GeoMedia Smart Client | Workflow Manager is the standalone product |

ABOUT GEOSYSTEMS

GEOSYSTEM is a software vendor and service partner with outstanding expertise in remote sensing, photogrammetry, GIS and geospatial data management. As Hexagon Geospatial premium partner in Germany, Austria, and Switzerland, GEOSYSTEMS offers the Power Portfolio, a worldwide leading software for visualization, analysis, deployment, and distribution of geographic data. Based on those products, GEOSYSTEMS develops customer specific solutions and implements tailor-made workflows. Services at GEOSYSTEMS covers workflow streamlining, process orientated consulting, software development, system integration, support, training, updates and maintenance. GEOSYSTEMS is internationally successful for more than 25 years. GEOSYSTEMS is located in Germering near Munich, Germany.

For more information, please call +49 89 894343-0, or visit www.geosystems.de.



About Hexagon Geospatial

Hexagon Geospatial helps you make sense of the dynamically changing world. Known globally as a maker of leading-edge technology, we enable our customers to easily transform their data into actionable information, shortening the lifecycle from the moment of change to action. Hexagon Geospatial provides the software products and platforms to a large variety of customers through direct sales, channel partners, and Hexagon businesses. For more information, visit hexagongeospatial.com or contact us at marketing@hexagongeospatial.com.

Geospatial is part of Hexagon, a leading global provider of information technologies that drive productivity and quality across geospatial and industrial enterprise applications. Hexagon's solutions integrate sensors, software, domain knowledge and customer workflows into intelligent information ecosystems that deliver actionable information. They are used in a broad range of vital industries. Hexagon (Nasdaq Stockholm: HEXA B) has more than 16,000 employees in 46 countries and net sales of approximately 3.4bn USD. Learn more at hexagon.com and follow us @HexagonAB.