

Installation and Licensing ATCOR Workflow for IMAGINE 2020

Content

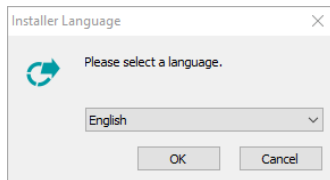
1)	Prerequisites for installation:	1
2)	ATCOR Workflow Installation Process:	2
3)	Update De-/Installation	4
4)	Licensing GEOSYSTEMS ATCOR Workflow for IMAGINE:	4

1) Prerequisites for installation:

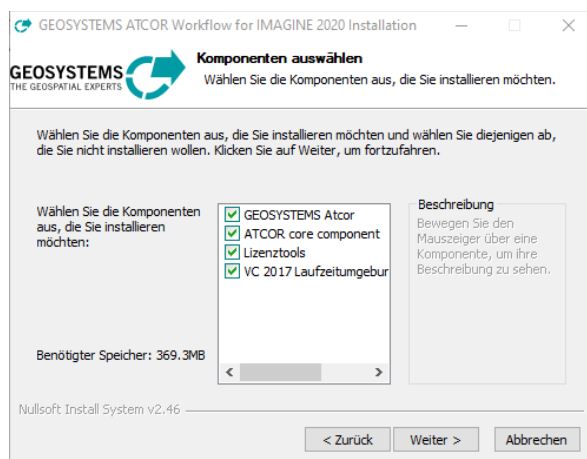
1. ERDAS IMAGINE **2020** (installed and licensed)
2. GEOSYSTEMS License Tools (<https://www.geosystems.de/en/products/atcor-workflow-for-imagene/download/>)
3. ATCOR Workflow Installer (<https://www.geosystems.de/en/products/atcor-workflow-for-imagene/download/>)
4. ATCOR Workflow for IMAGINE License Key and the corresponding ReSe License Key (both provided by GEOSYSTEMS) (see **Chapter 4** for retrieving the Host-ID for licensing)

2) ATCOR Workflow Installation Process:

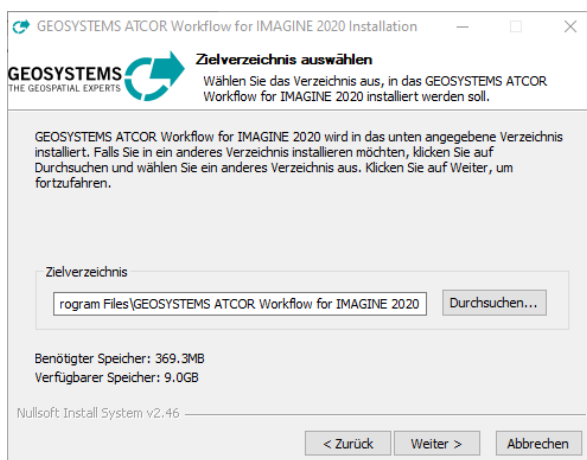
- a) Start the installer for ATCOR Workflow for IMAGINE 2020
- b) Select an Installer Language



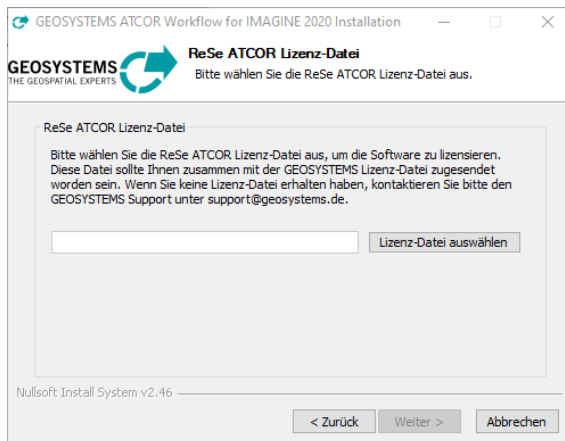
- c) Close other applications, if open (i.e. IMAGINE)
- d) Agree license terms
- e) Check all boxes for a new installation
- f) Check mark Licensing Tools, if not already installed



- g) Select Destination Folder

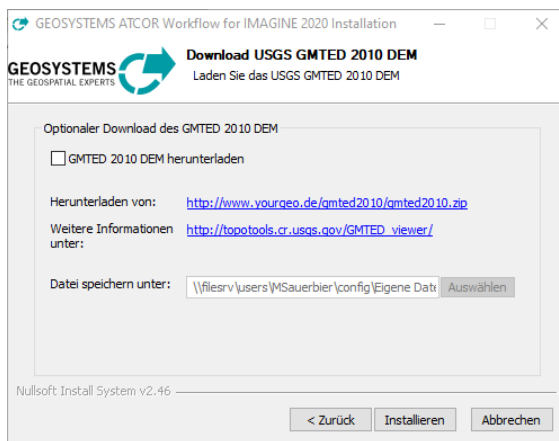


- h) Select the provided ReSe ATCOR License to continue:

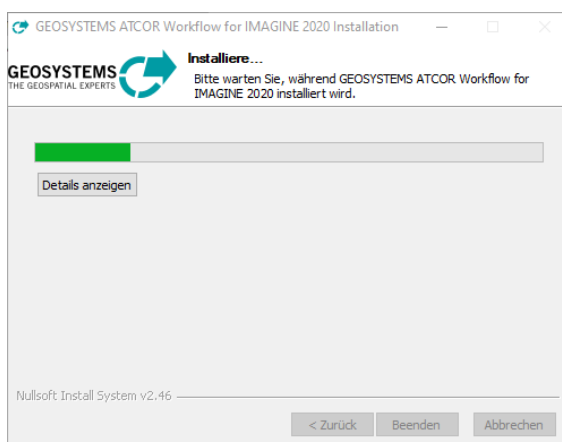


If the ReSe License is missing please get in contact with keycode@geosystems.de

- i) If required, a basic DEM can be installed. (optional for enhancing the ATCOR3 process)



- j) Install ATCOR Workflow for IMAGINE



3) Update De-/Installation

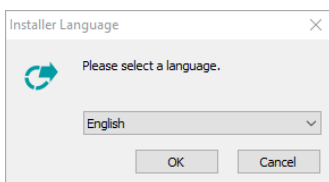
If you do have an older Version installed on your system, please deactivate and remove it before installing the new one.

Important: Do not deinstall IMAGINE before ATCOR Workflow for IMAGINE!

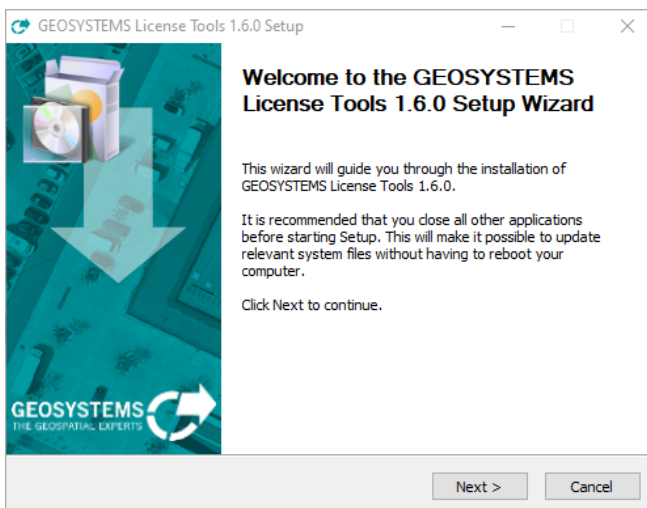
- a) Close IMAGINE
- b) Stop GEOSYSTEMS License Service
- c) Deinstall ATCOR Workflow for IMAGINE under Program and Features
- d) Install the new ATCOR Workflow for IMAGINE as described above
(You may uncheck GEOSYSTEMS License Tools)

4) Licensing GEOSYSTEMS ATCOR Workflow for IMAGINE:

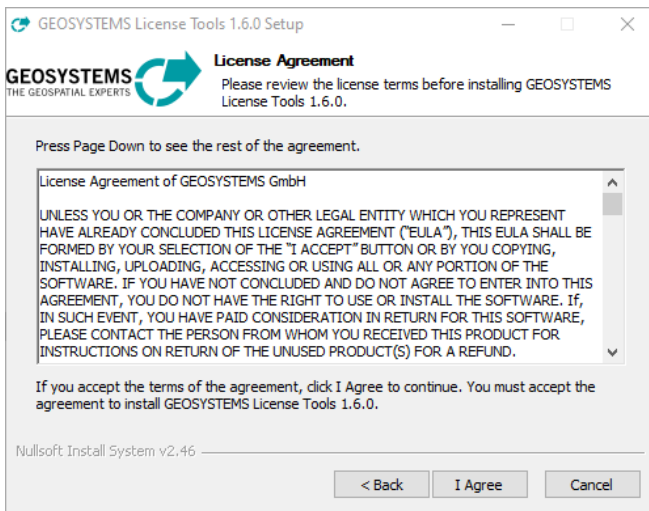
- 1) Install [GEOSYSTEMS License Tool](#)
 - a) Select Installer Language for the GEOSYSTEMS License Tool



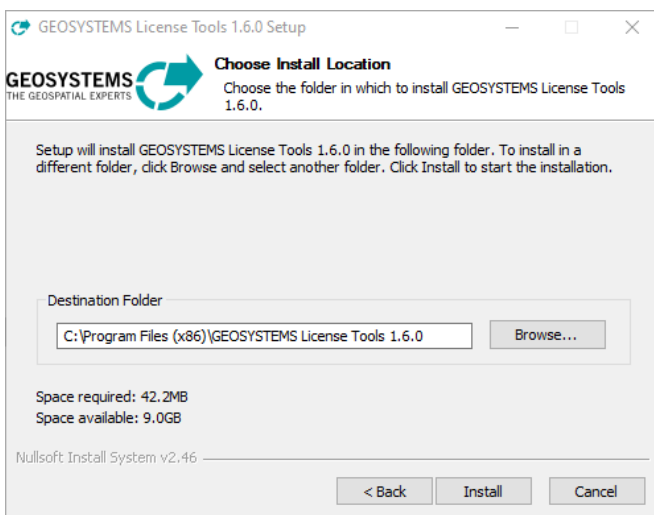
- b) Start GEOSYSTEMS License Tools Setup



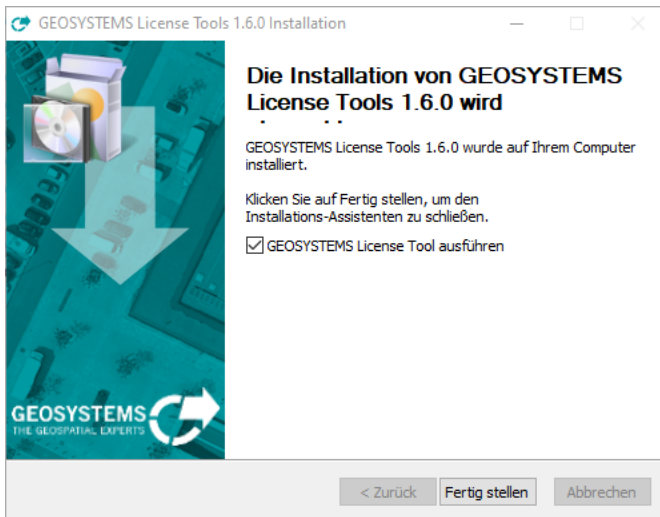
c) Accept Terms of Agreement



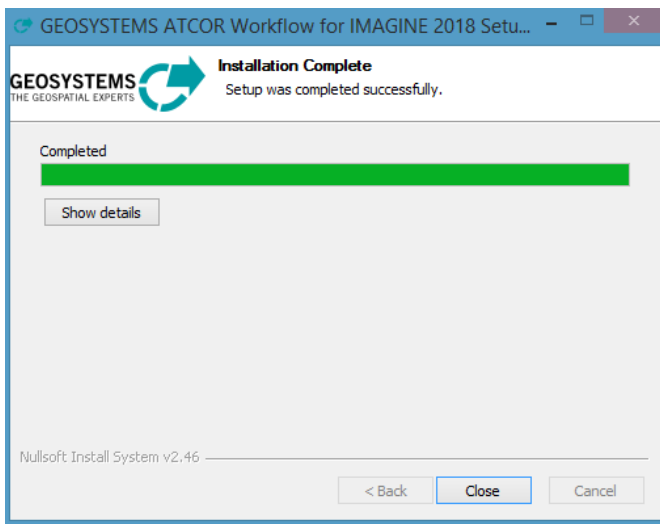
d) Define Destination Folder and start the installation



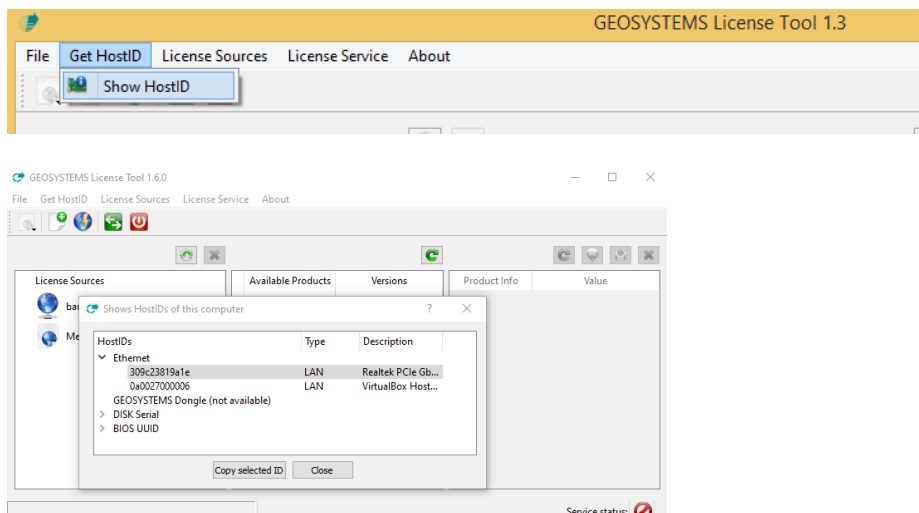
e) Start GEOSYSTEMS License Tools



k) Close GEOSYSTEMS Installation Guide



2) Use the "Get HostID"-function to derive the Host-ID.



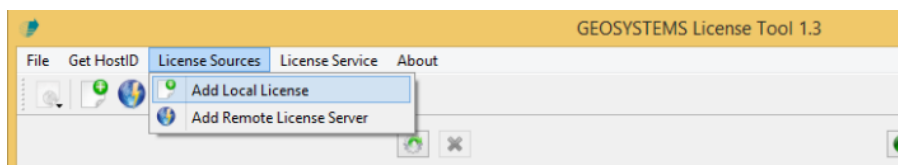
- a) Use the 'Copy selected ID' Button and submit the Host-ID to us (keycode@geosystems.de)

Please use a LAN-ID, if possible.
Wireless-IDs do not exist, when the device is switched off.

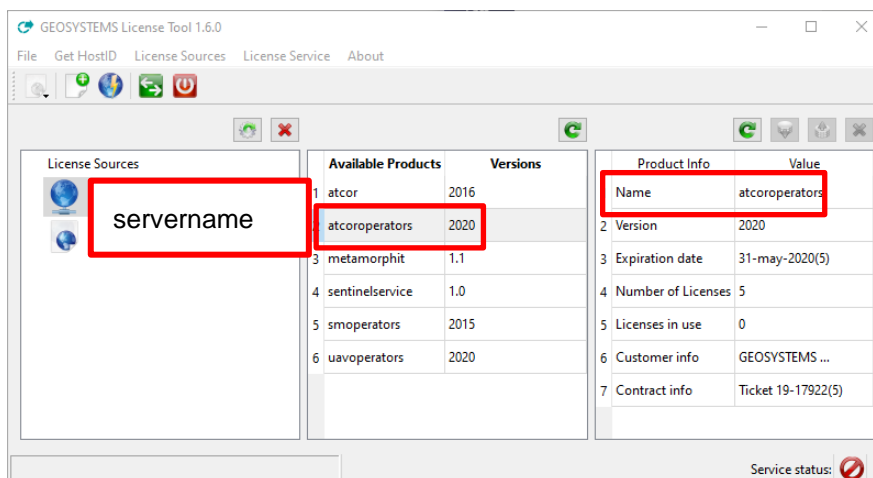
- b) The ATCOR Workflow license like the ReSe ATCOR license (needed during the installation process) will be send to you as soon as possible.

3) Adding the license

- a) After receiving the ATCOR Workflow License you can load it via 'Add Local License':



- b) Finally, your correct License Tool should look like this (click on current license source and product to display):



Contact:

GEOSYSTEMS GmbH
Support-Team
Riesstrasse 10
82110 Germering
GERMANY
T: +49 89 894343-44
E: support@geosystems.de
www.geosystems.de

