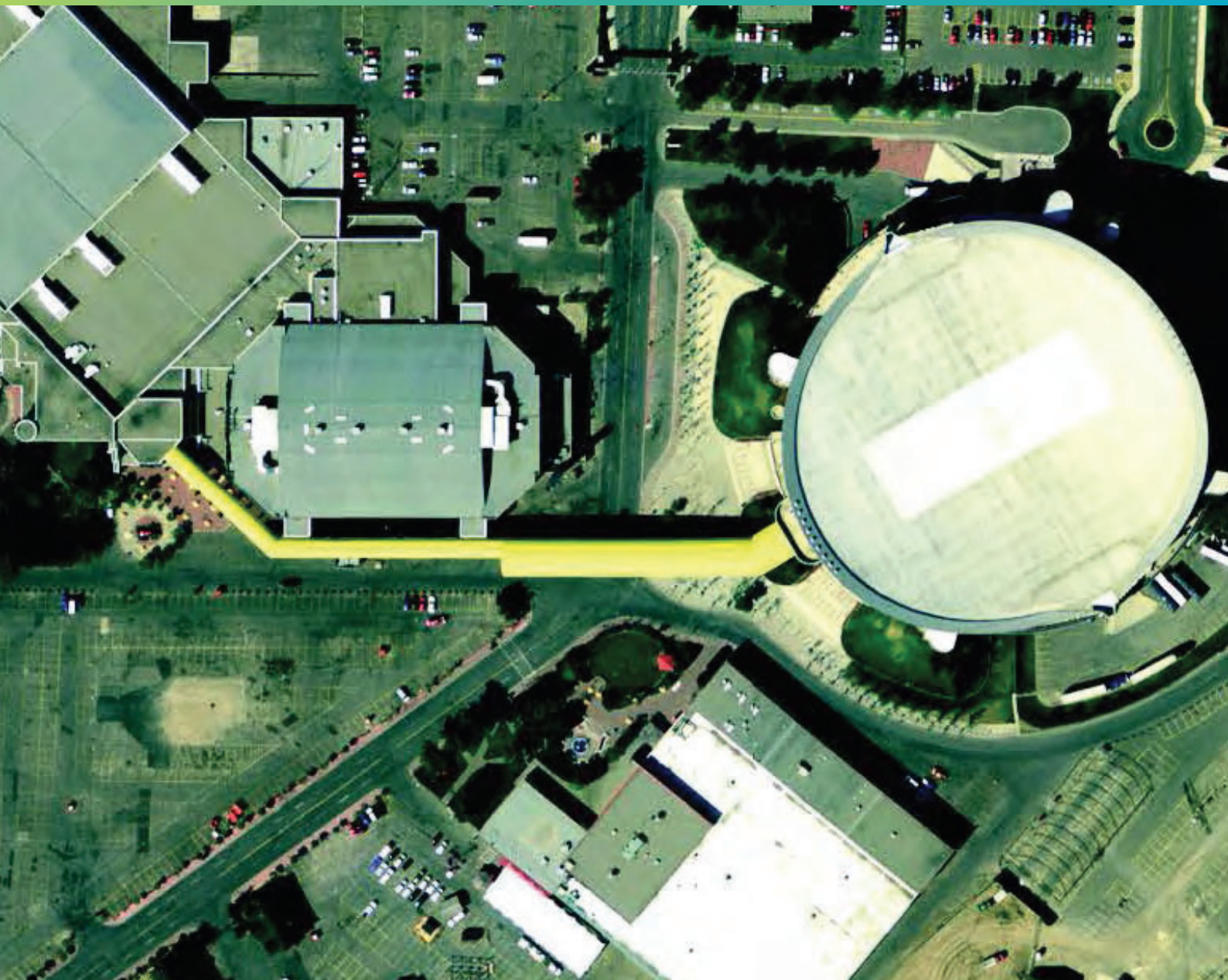


## **ECW for ArcGIS® Server**

Deliver ECW imagery from ArcGIS Server

ECW for ArcGIS® Server inserts ECW format support into the Esri Server platform, enabling users to serve ECW imagery like any other raster format. Users worldwide rely on Hexagon's Enhanced Compression Wavelet (ECW) technology to compress bulky imagery files into manageable sizes – all while preserving visual quality

of the images. ECW is already supported in traditional desktop GIS, CAD and remote sensing packages such as: ArcGIS, AutoCAD, ERDAS IMAGINE, BricsCAD, ENVI, FalconView, Bentley MicroStation and PCI Geomatica.



## Accelerate your geospatial workflow

With ECW support, ArcGIS Server users can leverage compression technology capable of quickly decompressing extremely large coverage, high-resolution areas faster than other imagery-based formats. Despite the use of high rate compression, ECW has a heavily optimised decompression pipeline that means rendering performance in many cases will outperform uncompressed originals.

### ECW for ArcGIS Server

ECW provides the following benefits:

- **Save time** using the fastest imagery compression format available. With ECW compression, no intermediate tiles are created and the format leverages hardware acceleration to achieve blistering fast encoding speeds. Want to deliver a high-resolution, state-sized mosaic in a matter of hours? With ECW, you can.
- **Reduce image storage costs** by working with an optimised file format to significantly reduce disk requirements. For example, compressing one terabyte of raw imagery at a 1:25 compression rate can result in a file less than 40 gigabytes, with quality indistinguishable from the original. Multi-resolution level of detail is built into the file, eliminating the need to generate or distribute pyramid files. ECW is ready to go as soon as it's created.
- Allows **rapid viewing** of imagery in any client application. ECW is supported in traditional Esri ArcGIS, ArcGIS Pro and other software packages across the industry.
- Optimised decompression requires **minimal overhead** and can deliver to a very large number of users. Using standard hardware, you can disseminate huge quantities of imagery data to more users than any competitive product can handle.
- **Lowers administration cost and effort**, as ECW imagery is trivial to manage, and once created can be used everywhere. It requires no additional optimisation for server use.
- Retain existing **platform investment** and augment with a format not supported out of the box. Gain a competitive advantage in your market by optimising your backend server infrastructure.

## About Hexagon

Hexagon is a global leader in digital reality solutions, combining sensor, software and autonomous technologies. We are putting data to work to boost efficiency, productivity, quality and safety across industrial, manufacturing, infrastructure, public sector, and mobility applications. Our technologies are shaping production and people-related ecosystems to become increasingly connected and autonomous – ensuring a scalable, sustainable future.

Hexagon's Safety, Infrastructure & Geospatial division improves the resilience and sustainability of the world's critical services and infrastructure. Our solutions turn complex data about people, places and assets into meaningful information and capabilities for better, faster decision-making in public safety, utilities, defense, transportation and government.

Hexagon (Nasdaq Stockholm: HEXA B) has approximately 21,000 employees in 50 countries and net sales of approximately 3.8bn EUR. Learn more at [hexagon.com](https://www.hexagon.com) and follow us [@HexagonAB](https://twitter.com/HexagonAB).

© 2021 Hexagon AB and/or its subsidiaries and affiliates. All rights reserved. Hexagon is a registered trademark. For a listing of other registered trademarks, please visit <https://www.hexagon.com/legal/trademarks>. All other trademarks or service marks used herein are property of their respective owners. 12/21



GEOSYSTEMS is a solution provider in the geospatial arena and helps public authorities, private companies and educational organizations to easily transform location-based data into actionable information. As Hexagon diamond partner, GEOSYSTEMS offers not only lead-ing-edge products for remote sensing, photogrammetry, GIS and data management, but also M.App solutions for easy-to-use dynamic map experiences. In addition, GEOSYSTEMS develops customized applications, implements tailor-made workflows and provides excellent trainings.

GEOSYSTEMS is an OHB company. For more information, please call +49 89 8943430, or visit [www.geosystems.de](https://www.geosystems.de).