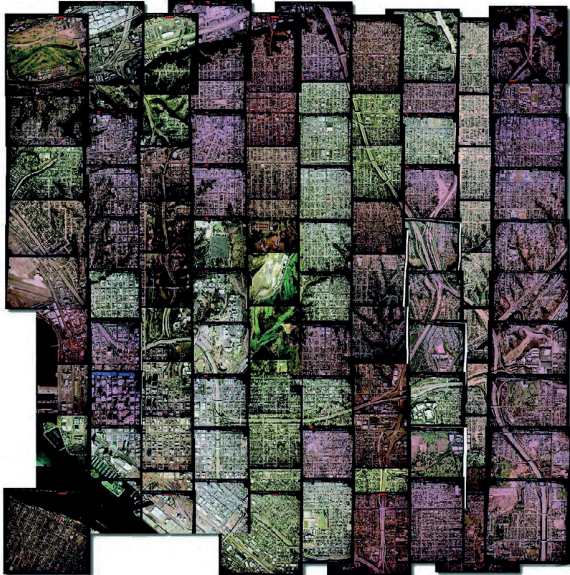


Image compression in ERDAS IMAGINE

Compressed imagery is efficient imagery



When you compress your imagery the result is a much smaller file that will be easier to store, send and display even on smaller devices and in lower bandwidth networks. ERDAS IMAGINE provides support for numerous compression techniques including the world-leading ECW and JPEG 2000 wavelet algorithms.



Before mosaicking and compression: Multiple images and 10GB of data



After mosaicking and compression: 1 Image and only 500MB of data

Compression capabilities

In ERDAS IMAGINE, compression capabilities for ECW, JPEG 2000, MrSID, JFIF (JPEG), IMG, TIFF, and BigTIFF are offered in all three product tiers. IMAGINE Essentials tier creates compressed files using Virtual Mosaic and Export functions (single or batch). Some file formats may also be written directly from processing functions. IMAGINE Advantage tier adds multi-core batch compression, higher output file sizes, and CADRG, CIB, ECRG, and ECIB format provisions. IMAGINE Professional tier adds the functionalities of ERDAS ER Mapper, as well as higher output file size provisions. Creation of JPEG 2000 compressed NITF data requires the IMAGINE Expansion Pack module.

Compression capabilities	Essentials	Advantage	Professional
ECW for output files up to 250 Gpixels	•	•	•
JPEG 2000 for output files up to 250 Gpixels	•	•	•
MrSID for input files up to 50 MB (with add-on MrSID encoders available to extend the limit to 500 MB or unlimited)	•	•	•
JFIF (JPEG) output files up to 65,535 rows and columns	•	•	•
TIFF with JPEG compression output file up to 4 GB	•	•	•
TIFF with LZW compression output file up to 4 GB	•	•	•
TIFF with Packbits compression output file up to 4 GB	•	•	•
BigTIFF with JPEG compression output file > 4 GB	•	•	•
BigTIFF with LZW compression output file > 4 GB	•	•	•
BigTIFF with Packbits compression output file > 4 GB	•	•	•
ERDAS IMAGINE DR-RLE output file up to 2 GB		•	•
Multi-core batch compression (up to 4 processes per IMAGINE Advantage or ERDAS Engine license)		•	•
Seamless mosaic generation in the MosaicPro tool		•	•
Many image processing functions		•	•
ECW for output files up to 500 Gpixels		•	•
JPEG 2000 for output files up to 500 Gpixels		•	•
CADRG with limits per the RPF format specification		•	•
CIB with limits per the RPF format specification		•	•
ECRG with limits per the format specification		•	•
ECIB with limits per the format specification		•	•
ERDAS ER Mapper compression capabilities			•
ECW for output files greater than 500 Gpixels			•
JPEG 2000 for output files greater than 500 Gpixels			•

About Hexagon

Hexagon is a global leader in digital reality solutions, combining sensor, software and autonomous technologies. We are putting data to work to boost efficiency, productivity, quality and safety across industrial, manufacturing, infrastructure, public sector, and mobility applications. Our technologies are shaping production and people-related ecosystems to become increasingly connected and autonomous – ensuring a scalable, sustainable future.

Hexagon's Safety, Infrastructure & Geospatial division improves the resilience and sustainability of the world's critical services and infrastructure. Our solutions turn complex data about people, places and assets into meaningful information and capabilities for better, faster decision-making in public safety, utilities, defense, transportation and government.

Hexagon (Nasdaq Stockholm: HEXA B) has approximately 21,000 employees in 50 countries and net sales of approximately 3.8bn EUR. Learn more at [hexagon.com](https://www.hexagon.com) and follow us @HexagonAB.

© 2021 Hexagon AB and/or its subsidiaries and affiliates. All rights reserved. Hexagon is a registered trademark. For a listing of other registered trademarks, please visit <https://www.hexagongeospatial.com/legal/trademarks>. All other trademarks or service marks used herein are property of their respective owners. 12/21



GEOSYSTEMS is a solution provider in the geospatial arena and helps public authorities, private companies and educational organizations to easily transform location-based data into actionable information. As Hexagon diamond partner, GEOSYSTEMS offers not only lead-ing-edge products for remote sensing, photogrammetry, GIS and data management, but also M.App solutions for easy-to-use dynamic map experiences. In addition, GEOSYSTEMS develops customized applications, implements tailor-made workflows and provides excellent trainings.

GEOSYSTEMS is an OHB company. For more information, please call +49 89 8943430, or visit www.geosystems.de.