



## GEOMEDIA® SMART CLIENT FOR PUBLIC WORKS

Keeping a modern, active community running smoothly is no small feat. This mission requires that public works organizations keep track of massive amounts of information: from permits and records to the inspection, maintenance, and updates of a wide variety of infrastructure assets (e.g., fire hydrants, manholes, pipes, street furniture, and buildings).

By incorporating geospatial data and new technology into your public works operations, you can streamline your projects by improving the communication between your field personnel and supervisors, ensure your field personnel only see the appropriate and current geospatial asset data, and reduce the cost of enabling geospatial tools for field personnel. You can also efficiently manage inspections and inventory of your critical above and underground assets, such as road, sewer, hydrants, signs, sidewalks, and buildings with new geospatial technology.

Hexagon Geospatial's GeoMedia® Smart Client is the ideal solution for public works departments. It provides customer-specific field inspection and planning workflows that let you update asset information, edit the feature layers that display your assets on a map, query your data repositories, and analyze that data to obtain valuable, real-world information. You can also easily add related documents, drawings, and photos, as well as review any related information added by others. You can even work in disconnected mode from the Internet in areas of poor cell phone coverage. When you reconnect to the network and restart GeoMedia Smart Client, your data edits will be automatically uploaded. Data conflict resolution based on criteria you specify may be provided via project services.

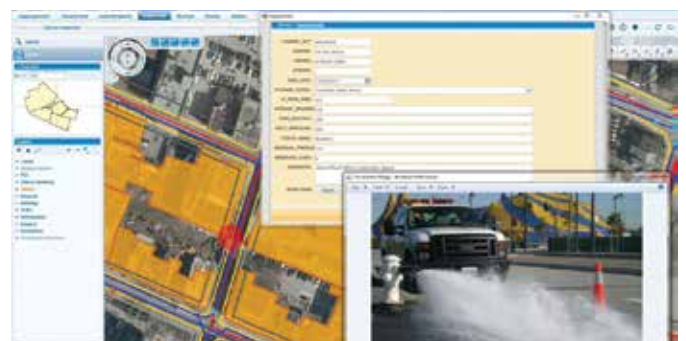
GeoMedia Smart Client brings the benefits of a powerful GIS to everyone in your organization. With this product, you don't have to worry about maintaining extensive and expensive custom code. Workflow and rules definition configuration tools are provided out-of-the-box to assist you in developing highly focused business workflows for public works operations. This geospatial asset management solution supports dynamic life-cycle workflows, feature-level access control, data validation and behavior, and integration to other systems.

### STREAMLINED PUBLIC WORKS FIELD INSPECTION WORKFLOWS

GeoMedia Smart Client provides user-friendly field inspection and planning workflows, including updating asset information, reviewing related documents and drawings, adding photos, and reviewing related information in Work Order, Permitting, and Enterprise Asset Management systems.

### REDUCED TRAINING OVERHEAD

With GeoMedia Smart Client's simple interface and task-specific forms and workflows with built-in data validation, you can reduce your training overhead while increasing



Easily upload photos to go along with your notes in the field, such as information on a particular hydrant.



your productivity and data quality. The user interface can be configured to match your public works operations so users only learn workflows tailored for their business practices.

## INCREASED INFORMATION SHARING/REUSE

Using controlled access, data models, and workflows, you can increase your information sharing across your public works operations. This helps curb inefficiencies, errors, and risks that arise when people across multiple departments work in data silos.

## LOWER SOFTWARE ADMINISTRATION COSTS

GeoMedia Smart Client's self-configuring web deployment removes the cost of installing and administering desktop software. Updates from software, the graphical user interface (GUI), and data models are automatically installed at runtime.

## WORKFLOWS WITHOUT EXTENSIVE CUSTOM CODE

Using workflow and rules definition configuration tools, you can create highly focused and efficient workflows tailored to your public works operations without the need to develop and maintain extensive and expensive custom code.



With GeoMedia Smart Client, field engineers can map a location for a new digging permit, and administrators can easily see and approve where they plan to dig.

## ABOUT GEOSYSTEMS

GEOSYSTEM is a software vendor and service partner with outstanding expertise in remote sensing, photogrammetry, GIS and geospatial data management. As Hexagon Geospatial premium partner in Germany, Austria, and Switzerland, GEOSYSTEMS offers the Power Portfolio, a worldwide leading software for visualization, analysis, deployment, and distribution of geographic data. Based on those products, GEOSYSTEMS develops customer specific solutions and implements tailor-made workflows. Services at GEOSYSTEMS covers workflow streamlining, process orientated consulting, software development, system integration, support, training, updates and maintenance. GEOSYSTEMS is internationally successful for more than 25 years. GEOSYSTEMS is located in Germering near Munich, Germany.

For more information, please call +49 89 894343-0, or visit [www.geosystems.de](http://www.geosystems.de).

### About Power Portfolio

The Power Portfolio from Hexagon Geospatial combines the best photogrammetry, remote sensing, GIS and cartography technologies available. Flowing seamlessly from the desktop to server-based solutions, these technologies specialize in data organization, automated geoprocessing, spatial data infrastructure, workflow optimization, web editing, and web mapping.

The Platform Suite enables you to efficiently build and deploy smart solutions that fit your needs.

### About Hexagon Geospatial

Hexagon Geospatial is part of Hexagon (Nasdaq Stockholm: HEXA B; [hexagon.com](http://hexagon.com)), a leading global provider of information technologies that drive quality and productivity improvements across geospatial and industrial enterprise applications. Learn more at [hexagon.com](http://hexagon.com).

© 2016 Hexagon AB and/or its subsidiaries and affiliates. All rights reserved. Hexagon and the Hexagon logo are registered trademarks of Hexagon AB or its subsidiaries. All other trademarks or servicemarks used herein are property of their respective owners. Hexagon Geospatial believes the information in this publication is accurate as of its publication date. Such information is subject to change without notice.

