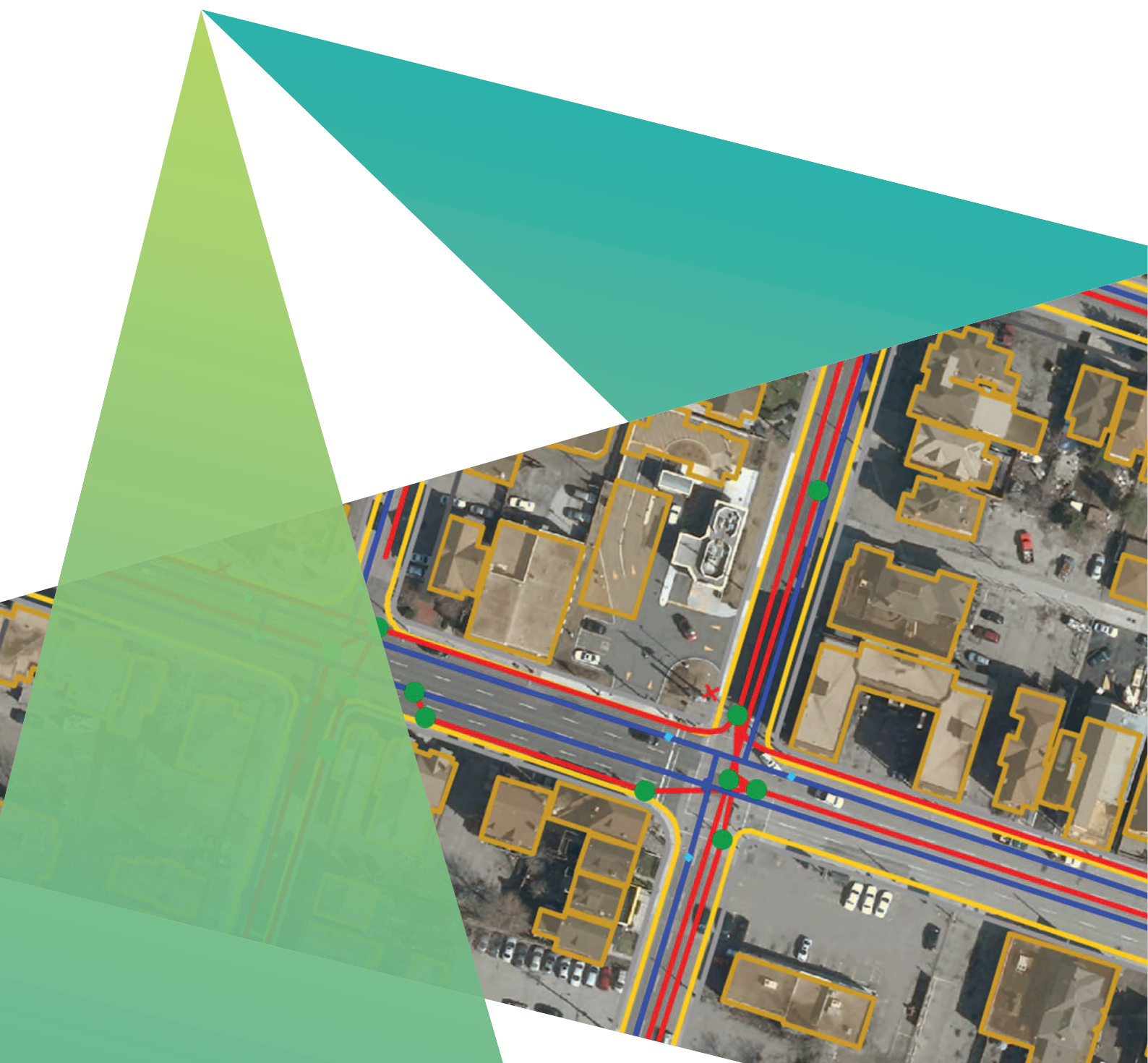


GeoMedia Smart Client

Dynamically jumpstart your GIS



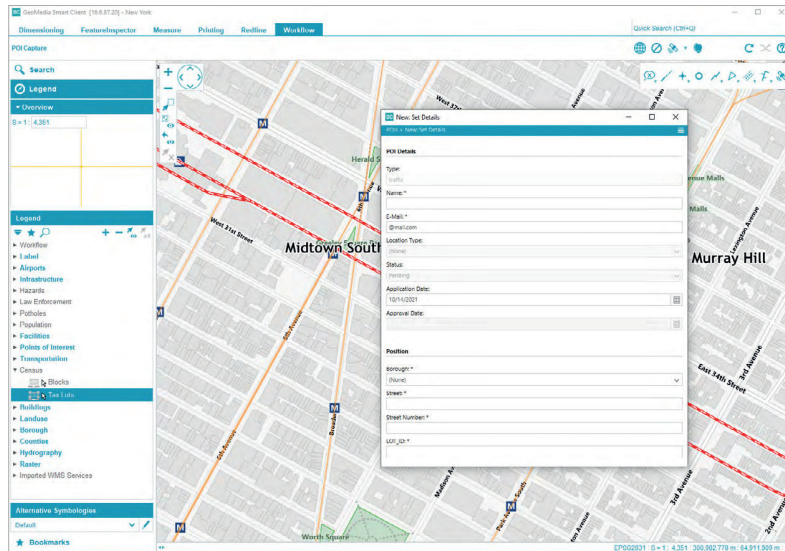
Is your geographic information system (GIS) gridlocked in a department? Limited to power users? Locked away?

Get out of the gridlock

Today, stakeholders across your organisation know the value of geographic information, but often lack the expertise to run a traditional desktop GIS. Online maps delivered by a web GIS are helpful, but these implementations often do not support the specific geospatial workflows required. Today, users need the power of GIS not as a horizontal technology, but delivered in vertical, market-focused workflows.

The vast majority of people who could really benefit from geospatial data need more than what a lightweight, browser-based web map can deliver. Likewise, they don't have the time or expertise to learn a technically demanding desktop environment. These users are eager to geospatially accelerate their business workflows and ignite the power of GIS. This requires a new approach: work outside the passive and limiting departmental deployments of the GIS that have plagued organisations for decades.





Define disconnected workflows that will enable end users to capture and edit attributive and spatial data while offline from the internet. Project-based conflict handling can be added through the workflow definitions.

The smart GIS

The enterprisewide “smart GIS” eliminates the disparity between the status quo and what a GIS needs to be. A smart GIS is the perfect GIS to:

- Connect and equip ALL users with the power of geography
- Break down the walls that have resulted in closed, passive and uninspiring one-dimensional systems
- Provide a platform for a world where geographic information is the key ingredient to jumpstarting business-critical workflows and understanding our changing Earth

GeoMedia Smart Client empowers individuals and departments to collectively ignite dynamic GIS. Geographic changes are easily and interactively implemented across an enterprisewide smart GIS, seamlessly integrating into customised workflows. You determine these vibrant geospatial business workflows, providing a level of sophistication not supported by legacy out-of-the-box horizontal software products.

Supported by robust toolkits, detailed instructions and interactive developer communities, you can build custom web, mobile and other smart enterprise solutions.

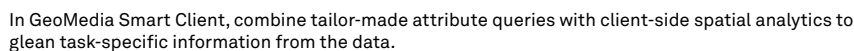
Discover the power of geography

GeoMedia Smart Client is for users interested in harnessing the power of geography and applying it to build a smarter world. Your end users will leverage advanced geospatial functionality via simple-to-use map based tools, streamlining their processes and honing their expertise. Workflow optimisation and intuitive web editing will be a reality embraced across your organisation.

Benefits

Implement once, use many times

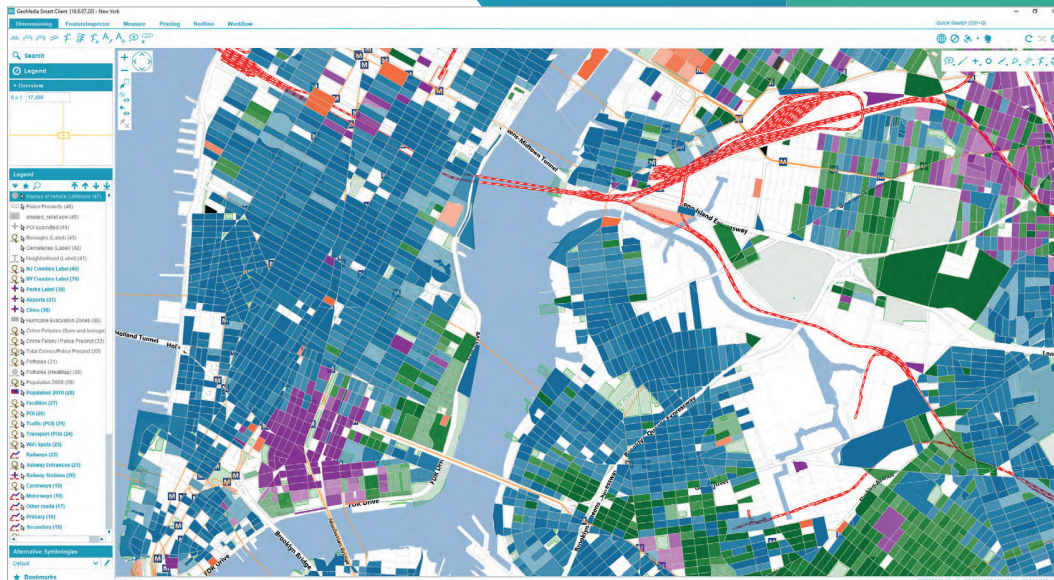
GeoMedia Smart Client meets the needs of multi-disciplinary operations, affordably enabling users in an organisation to access and use rich geospatial data in their business processes. This provides a forward-thinking alternative to heavy desktop-technology-centric products and expensive service providers with one-off, unimaginative (and disconnected) offerings. Instead of building customised workflows for each workgroup within an organisation using different vendors and tools, GeoMedia Smart Client unites this technology. With GeoMedia Smart Client, you create a single deployment that can be configured for an unlimited number of applications – making it the perfect GIS for a smarter organisation.



Historically, the desktop GIS was intended for the advanced and technical GIS professional. Later, web GIS was created to provide access to individuals requiring static maps with limited portrayals of geography. Consequentially, these two models of deployment have alienated potential users between or outside these personas.

GeoMedia Smart Client completes your existing desktop GIS by opening your geospatial assets to a larger audience. Geospatial datasets and maps produced from a desktop GIS feed a smart GIS with content, while leveraging the advantages of a web GIS in delivering light and application-specific solutions to more users.

With GeoMedia Smart Client, individuals across your organisation can create data, maps, reports and even charts and graphs for their projects, rather than having to rely on a GIS specialist or to outsource this work. Advanced geospatial functionality is fused into your core business workflows, enabling a wide audience to capture and edit data, use snapping tools, and perform redlining and geospatial queries. This includes the ability to define workflows that drive the user interface (GUI) to guide users step-by-step and provide a means to collect, update and validate your data. Ultimately, this enables non-GIS experts to exploit advanced GIS functionality in a smart way!



Display and print complex and high-quality cartographic maps based on the OGC standard Symbology Encoding (SE) and client-side vector data.

Reduces cost and complexity

GeoMedia Smart Client's technology removes many of the IT support services associated with installing and supporting desktop- and browser-based products. A self-configuring and updating "smart client" reduces the cost in buying and maintaining underutilised desktop GIS licences (and associated hardware). Other savings come from the following:

- Tying geospatial data into essential business workflows enables the creation of sustainable, on-going processes that satisfy the entire organisation
- Using intelligent geospatial data caching provides a huge boost to performance levels, and reduces the volume of data transferred from the server to a minimum
- An easy and intuitive interface reduces training costs

GeoMedia Smart Client's technology removes many of the IT support services associated with installing and supporting desktop- and browser-based products.

Complements other geospatial products

GeoMedia Smart Client can be used as a stand-alone solution, but is greatly enhanced when used in conjunction with GeoMedia WebMap to provide access to a wider variety of data types, including web services and on-the-fly coordinate transformation capabilities. Integrating GeoMedia WebMap enables Smart Client to use Open Geospatial Consortium (OGC) web services (WMS, WFS) and expands direct file support by 40 formats. The additional vector data support includes shapefiles, MS Access, MapInfo, DWG, DXF, and DGN; and expanded raster access support includes COT and ECW.

GeoMedia Desktop can also be used for the initial setup of the Smart Client project, in lieu of using the Smart Client administration console. With GeoMedia Desktop, you can easily access or add new features, define scale dependencies, register raster and vector data, or use other expert functionality.

Taking advantage of the rapid image delivery capabilities of ERDAS APOLLO, raster backdrops based on the fast ECWP streaming protocol may be directly consumed into GeoMedia Smart Client. ECWP provides superior image delivery performance when compared to any other image serving solution on the market, and substantially reduces the volume requirements of the client cache.



Create familiar, practical workflows in GeoMedia Smart Client. Create recognisable forms, applying your company look and feel.

Core features

Business logic and efficient workflows

At GeoMedia Smart Client's core is a highly configurable rules and workflow engine for implementing lifecycle workflows, feature-level access control, data validation and behavior, and integration to other systems. A simple user interface guides users with task-specific forms and workflows, increasing productivity and data quality. The coordinated access, data models and lifecycles increase information sharing and reuse. This avoids the inefficiencies, errors and risks that usually come with different departments working on their own silos of data.

High-end geospatial functionality

GeoMedia Smart Client fuses geospatial technology into your core business workflows, and supports advanced geospatial functionality, such as capturing and editing data, snapping tools, redlining, and also high-end geospatial queries. Process experts can predefine reports, forms and plot layouts so that non-GIS experts simply enter their information. Vector data support includes read/write from Oracle (10g and higher), Microsoft SQL Server (2008 and higher), and PostgreSQL (9.0 and higher) databases, all using supporting spatial extensions.

Simple deployment and management

Deployed on the standard Hexagon App Launcher, GeoMedia Smart Client is self-configuring. This provides a high-performance client platform compatible with most major operating systems (Windows, Linux, Mac, etc.) without depending on third-party products or the administrative issues that arise from browser versions and settings or operating system compatibilities. GeoMedia Smart Client communication between the client and application servers is entirely based on Web services using Simple Object Access Protocol (SOAP).

Products

GeoMedia Smart Client is available in three product tiers. To complement a broad range of customers – from a small business with a few users doing simple vector editing to large, multi-disciplinary environments supporting multiple business workflows across various departments.

GeoMedia Smart Client Essentials

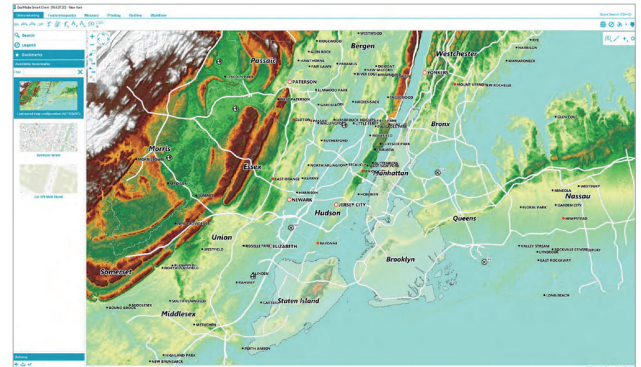
Organisations can provide high-end vector redlining functionality plus support for an unlimited number of users to display raster and vector maps, analyse and query data, print, and utilise measurement and dimensioning functions. Vector database support includes direct capability to read Oracle (10g and higher), Microsoft SQL Server (2008 and higher), and PostgreSQL (9.0 and higher). Raster format support includes TIFF, GeoTIFF, JPG and PNG. Advanced client and server caching is provided for both raster and vector data, ensuring high performance—even in a disconnected mode.

GeoMedia Smart Client Advantage

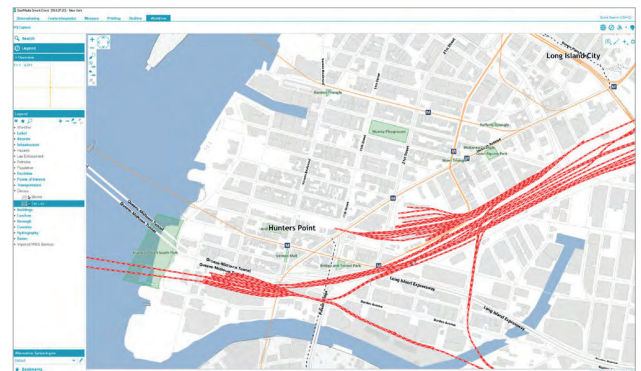
The additional Workflow Manager – Runtime module enables customers to utilise predefined business process workflows, edit attributes or capture and change spatial data on the web client, and push changes back to the server database, including Oracle (10g and higher), Microsoft SQL Server (2008 and higher) and PostgreSQL (9.0 and higher).

GeoMedia Smart Client Professional

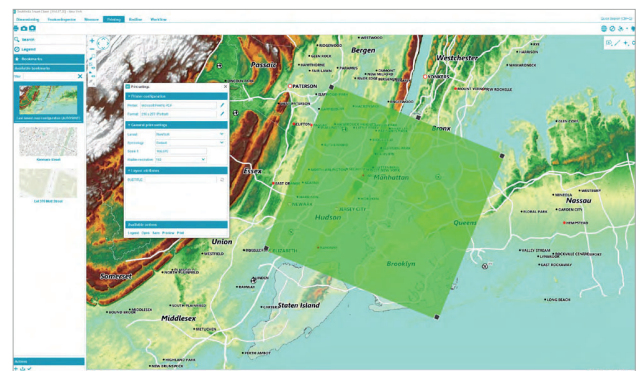
For those customers that want to define their own workflows or modify existing ones, this tier of GeoMedia Smart Client includes Workflow Manager – Editor. This enables an organisation to develop its own workflows or revise the structure, process and forms of current ones. Furthermore, organizations can extend insightful decision making to more people by delivering simple maps configured directly from GeoMedia Smart Client to the browser and public-facing websites.



GeoMedia Smart Client displays bookmarks with thumbnails, making it very easy to choose the right map content and spatial area.



Efficient map reading hinges upon unique and clear styles. GeoMedia Smart Client supports display and printing of complex and high quality cartographic maps based on the OGC standard Symbology Encoding (SE).



GeoMedia Smart Client provides powerful client-side large scale printing, including rotated views, legend definitions and predefined symbology.



Hexagon is a global leader in digital reality solutions, combining sensor, software and autonomous technologies. We are putting data to work to boost efficiency, productivity, quality and safety across industrial, manufacturing, infrastructure, public sector, and mobility applications. Our technologies are shaping production and people-related ecosystems to become increasingly connected and autonomous – ensuring a scalable, sustainable future.

Hexagon's Safety, Infrastructure & Geospatial division improves the resilience and sustainability of the world's critical services and infrastructure. Our solutions turn complex data about people, places and assets into meaningful information and capabilities for better, faster decision-making in public safety, utilities, defense, transportation and government.

Hexagon (Nasdaq Stockholm: HEXA B) has approximately 21,000 employees in 50 countries and net sales of approximately 3.8bn EUR. Learn more at hexagon.com and follow us [@HexagonAB](https://twitter.com/HexagonAB).



Hexagon Diamond Partner

GEOSYSTEMS is a solution provider in the geospatial arena and helps public authorities, private companies and educational organizations to easily transform location-based data into actionable information. As Hexagon diamond partner, GEOSYSTEMS offers not only lead-ing-edge products for remote sensing, photogrammetry, GIS and data management, but also M.App solutions for easy-to-use dynamic map experiences. In addition, GEOSYSTEMS develops customized applications, implements tailor-made workflows and provides excellent trainings.

GEOSYSTEMS is an OHB company. For more information, please call +49 89 8943430, or visit www.geosystems.de.