



ATCOR Workflow for IMAGINE 2023 Update 2

Installation Guide

Software version: 3.2

Content

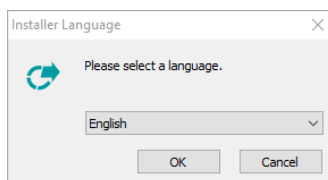
1	<i>Prerequisites for installation:</i>	2
2	<i>ATCOR Workflow Installation Process:</i>	2
3	<i>Update De-/Installation</i>	4
4	<i>Licensing GEOSYSTEMS ATCOR Workflow for IMAGINE:</i>	4
5	<i>Licensing of IDL 8.9 or 9.0 for ATCOR Workflow in Batch operation mode</i>	7

1 Prerequisites for installation:

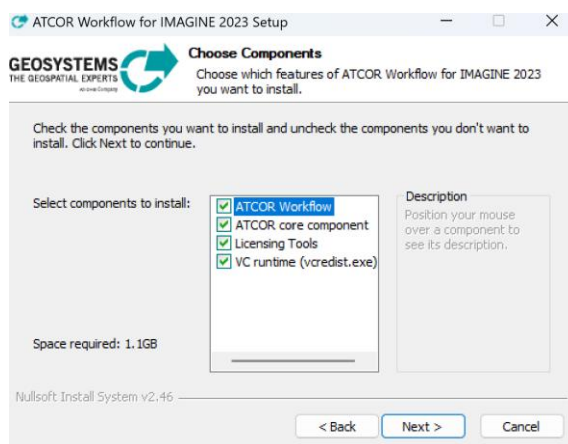
1. ERDAS IMAGINE **2023** (installed and licensed)
2. GEOSYSTEMS License Tools (<https://www.geosystems.de/en/products/atcor-workflow-for-imagine/download/>)
3. ATCOR Workflow Installer (<https://www.geosystems.de/en/products/atcor-workflow-for-imagine/download/>)
4. ATCOR Workflow for IMAGINE License Key and the corresponding ReSe License Key (both provided by GEOSYSTEMS) (**see Chapter 4** for retrieving the Host-ID for licensing)
5. Optional: Activation code for a commercial IDL 8.9 license for batch processing

2 ATCOR Workflow Installation Process:

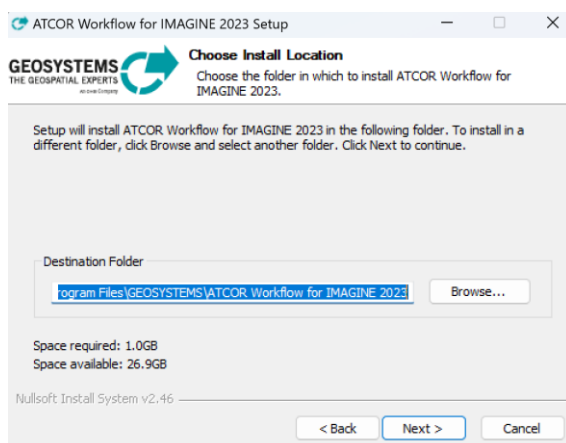
- a) Start the installer for ATCOR Workflow for IMAGINE 2023
- b) Select an Installer Language



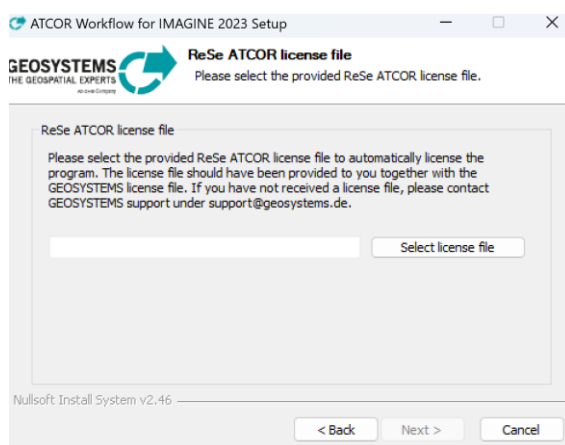
- c) Close other applications, if open (i.e. IMAGINE)
- d) Agree license terms
- e) Check all boxes for a new installation
- f) Check mark Licensing Tools, if not already installed



g) Select Destination Folder

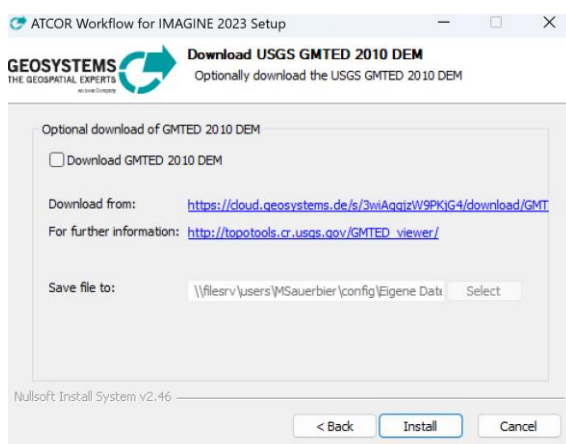


h) Select the provided ReSe ATCOR License to continue (.pro file):

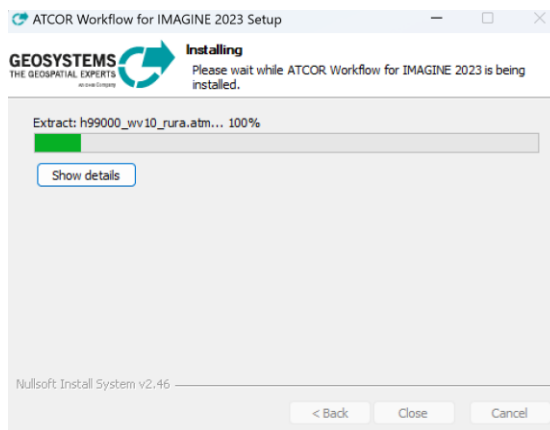


If the ReSe License is missing please get in contact with keycode@geosystems.de

i) If required, a basic DEM can be installed. (optional for enhancing the ATCOR3 process)



j) Install ATCOR Workflow for IMAGINE



3 Update De-/Installation

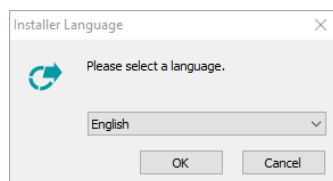
If you do have an older Version installed on your system, please deactivate and remove it before installing the new one.

Important: Do not deinstall IMAGINE before ATCOR Workflow for IMAGINE!

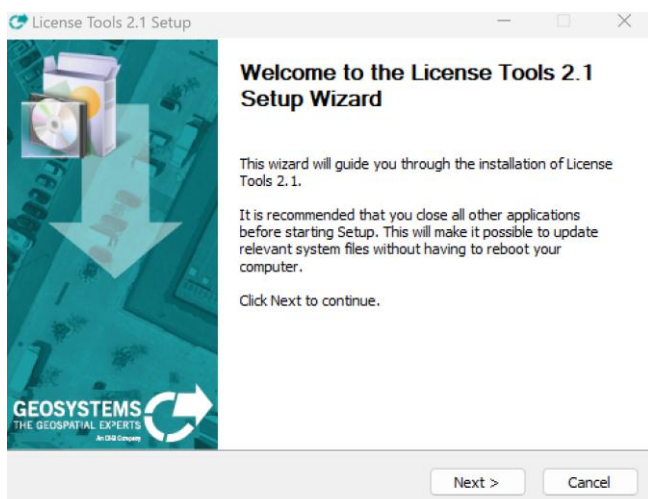
- a) Close IMAGINE
- b) Stop GEOSYSTEMS License Service
- c) Deinstall ATCOR Workflow for IMAGINE under Program and Features
- d) Install the new ATCOR Workflow for IMAGINE as described above
(You may uncheck GEOSYSTEMS License Tools)

4 Licensing GEOSYSTEMS ATCOR Workflow for IMAGINE:

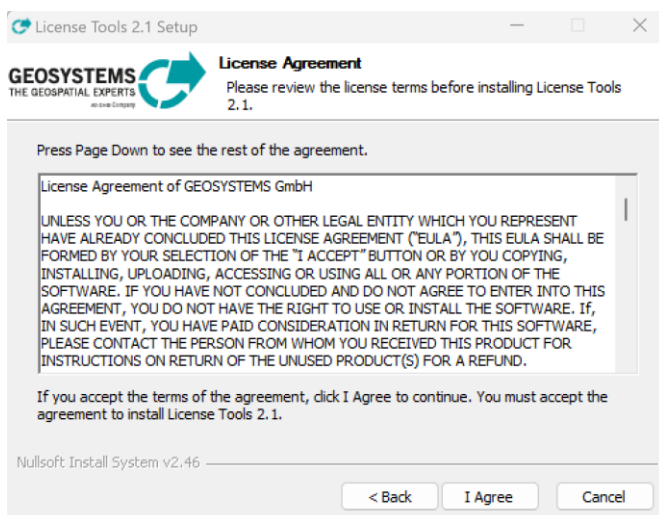
- 1) Install [GEOSYSTEMS License Tool](#)
 - a) Select Installer Language for the GEOSYSTEMS License Tool



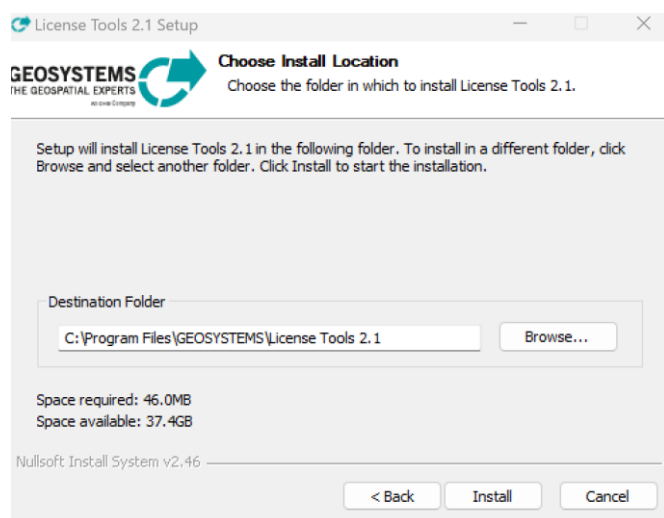
b) Start GEOSYSTEMS License Tools Setup



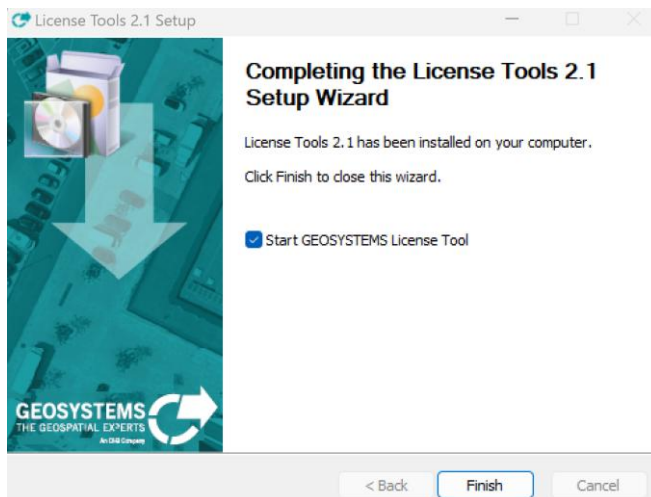
c) Accept Terms of Agreement



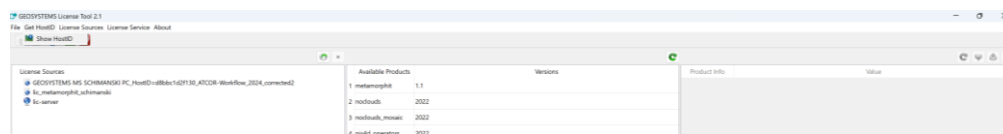
d) Define Destination Folder and start the installation



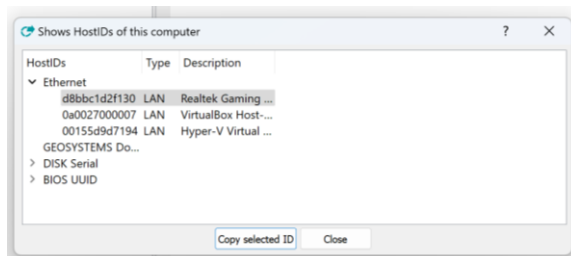
e) Start GEOSYSTEMS License Tools



2) Use the “Get HostID”-function to derive the Host-ID.



3)



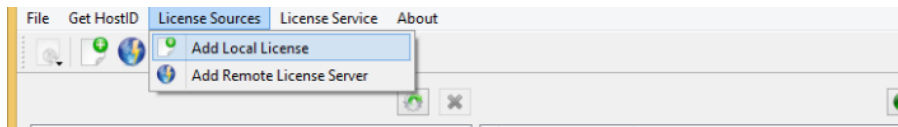
a) Use the ‘Copy selected ID’ Button and submit the Host-ID to us (keycode@geosystems.de)

Please use a LAN-ID, if possible.
Wireless-IDs do not exist, when the device is switched off.

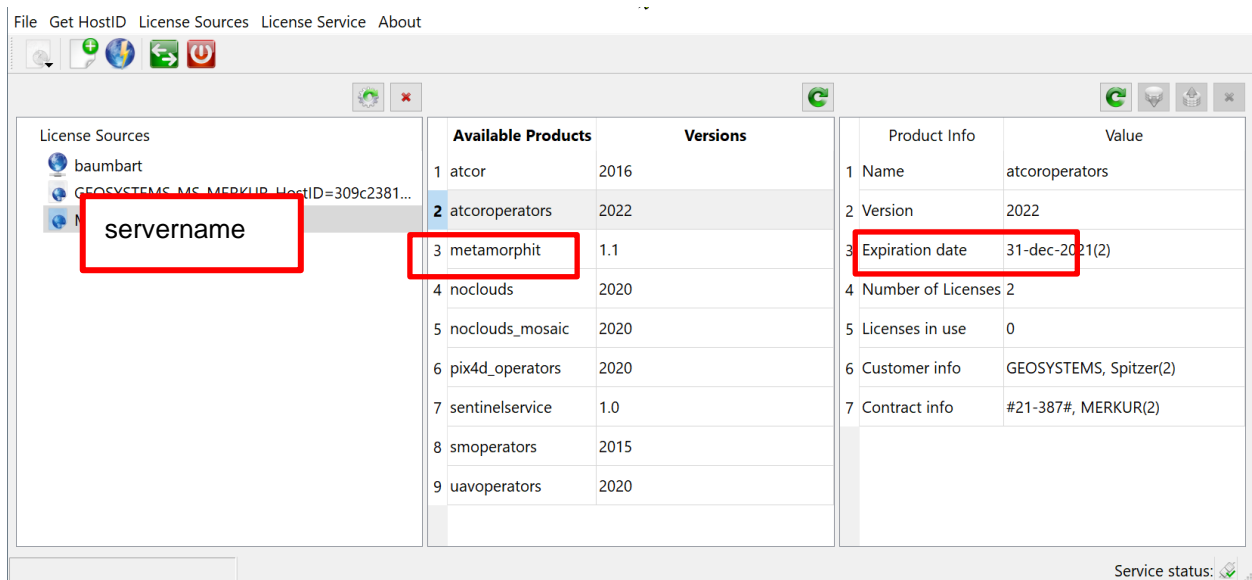
b) The ATCOR Workflow license like the ReSe ATCOR license (needed during the installation process) will be send to you as soon as possible.

4) Adding the license

a) After receiving the ATCOR Workflow License you can load it via ‘Add Local License’:



b) Finally, your correct License Tool should look like this (click on current license source and product to display):

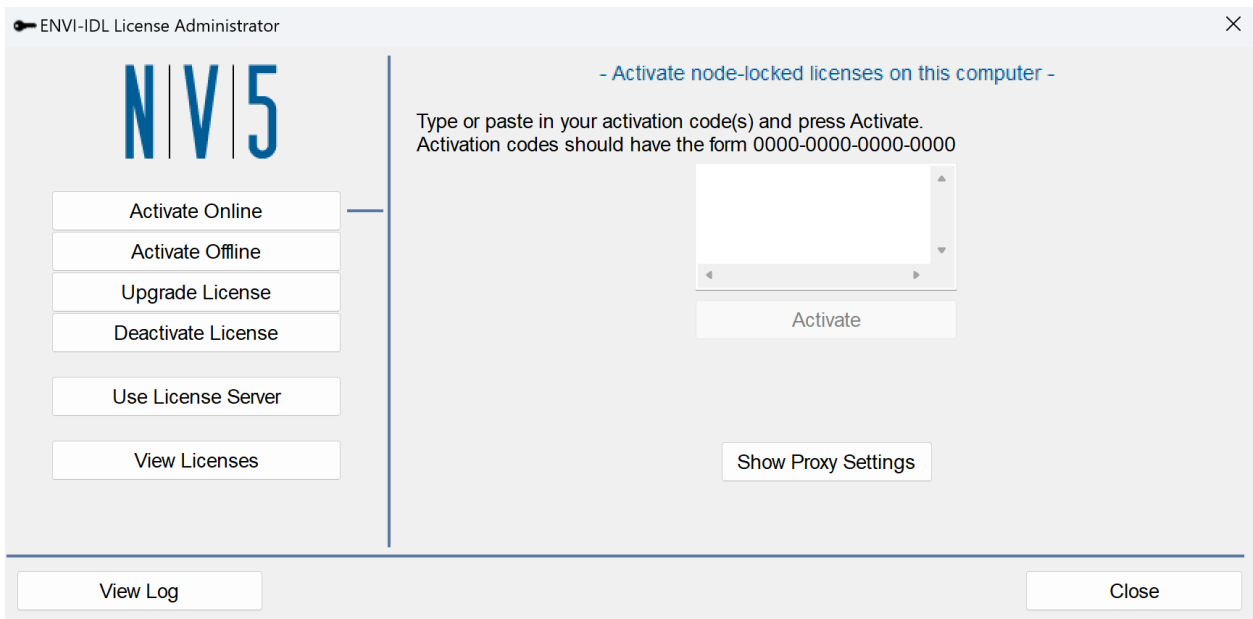


5 Licensing of 9.0 for ATCOR Workflow in Batch operation mode

If you have purchased the batch operation mode version of ATCOR Workflow for IMAGINE 2023, you have received an activation code for IDL 9.0 and a download link for the IDL 9.0 software. If you have downloaded the ZIP-file, after extraction you should see the installer:

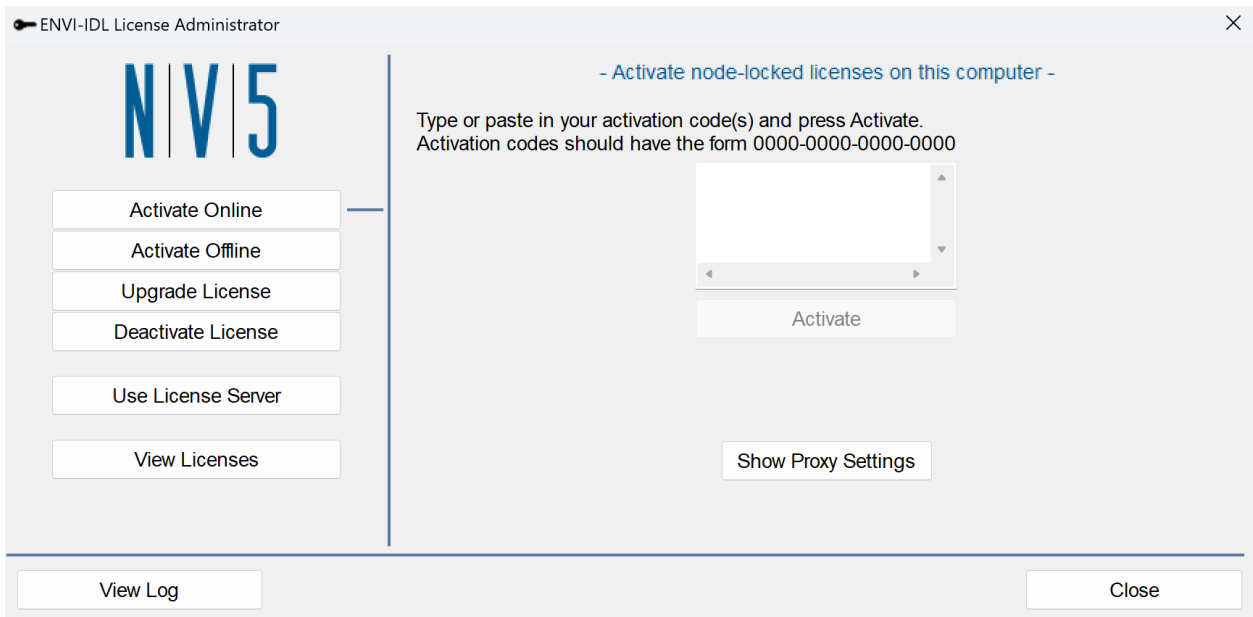
- 1) idl90-win.exe (no need for the patch)

Install both in the mentioned order to the **default directory on the machine that will serve as the license server** as proposed by the installers. Then, start the Harris license administration tool **NV5 License Administrator**. It should look like the following figure:

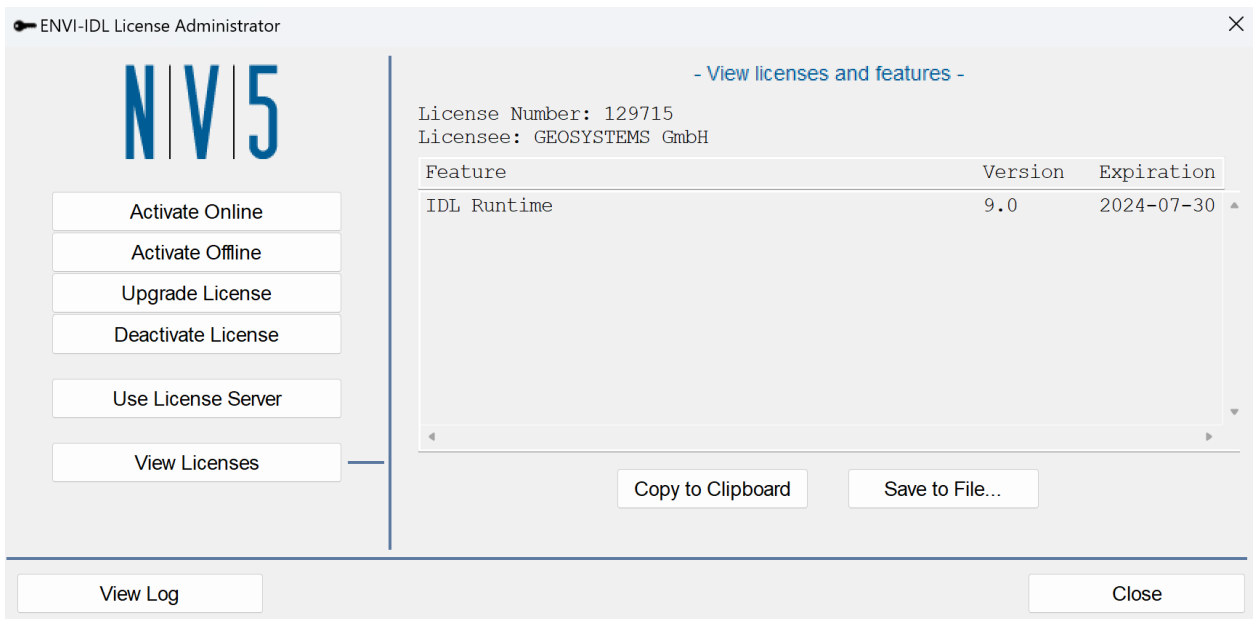


Here, you have different options depending on your IT infrastructure.

Choose “Activate License on this Server” and set the Port (default: 4080) if necessary. Make sure that the Port is enabled in your network environment. Insert the IDL activation code in the empty field, make sure that “Quantity” matches the number of your IDL licenses and press activate. The following screenshot shows the activation window:

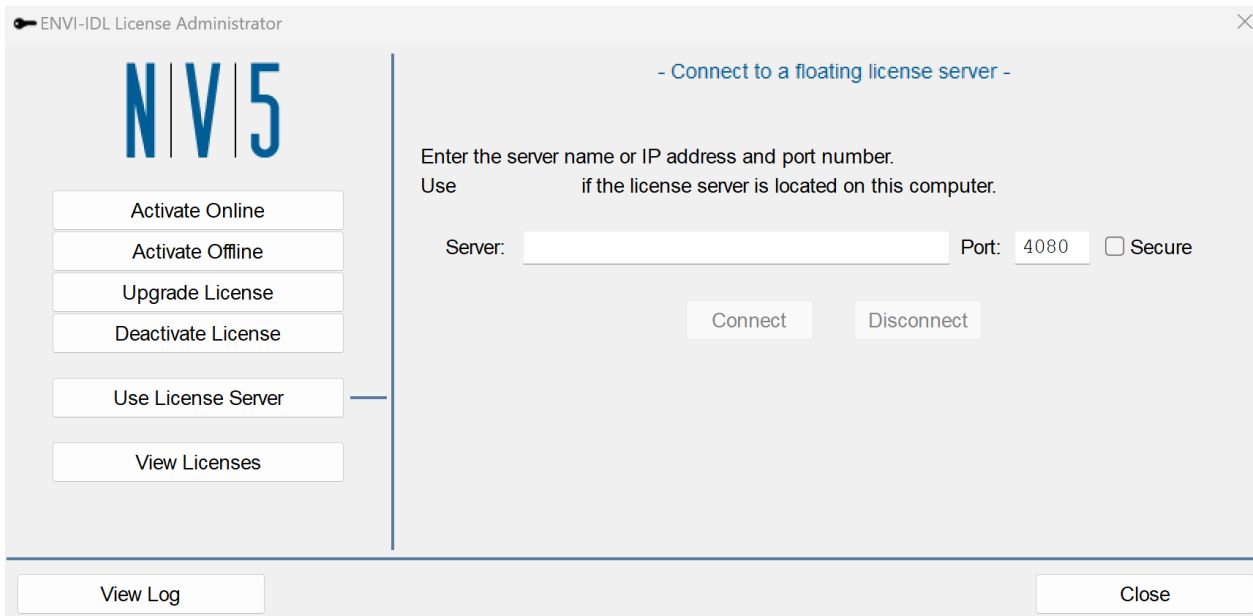


After activation, check under “View Licenses” if they were activated successfully:



If the client, on which you want to run ATCOR Workflow, is a different machine than the license server, proceed as follows:

Install `idl90-win.exe` and start the **NV5 License Administrator** on the client computer and choose “Use License Server”:



Enter the name of your license server in the “Server:”-field and add the port number (default: 4080) in the “Port:”-field. Then, click “Connect” and verify afterwards again using “View Licenses” if the connection to the license server was successful.

Contact:

GEOSYSTEMS GmbH

Support-Team

Friedrichshafener Str. 1

82205 Gilching

GERMANY

T: +49 8105 39883-55

E: support@geosystems.de

www.geosystems.de