



ECW PLUGIN FOR AUTOCAD

ACCELERATE YOUR GEOSPATIAL WORKFLOW

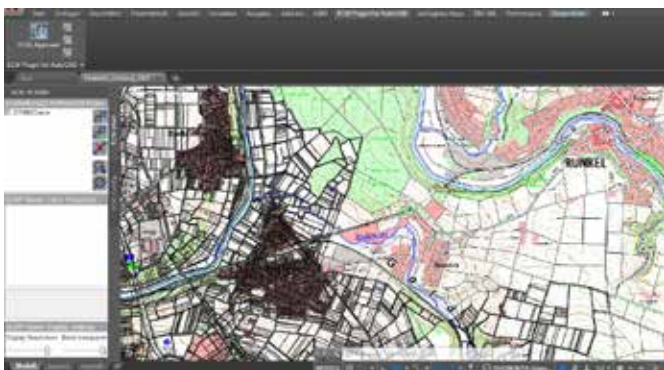
Struggling with raster data handling in AutoCAD, Map3D, Civil3D and other Autodesk products? You can use the free ECW Plugin for AutoCAD to:

- Stream high resolution imagery over the Enhanced Compressed Wavelet Protocol (ECWP) from ERDAS APOLLO remote services or
- Access ECW v3, ECW v2, and JPEG 2000 files stored on your local machine or in the network

Both workflows can be inserted as one or more raster layers into any AutoCAD drawings.

Users worldwide rely on Hexagon Geospatial's Enhanced Compression Wavelet (ECW) technology to compress bulky imagery files into manageable sizes – all while preserving visual quality of the images.

With ECW support, AutoCAD users can leverage compression technology capable of quickly decompressing and opening massive files, in many cases faster than uncompressed imagery can be opened. This powerful extension enables AutoCAD to deliver images much faster.



ECW IMAGERY FORMAT ADVANTAGES

Hexagon Geospatial's Enhanced Compression Wavelet (ECW) is a high-performance, image-compression format designed specifically for geospatial imagery.

SAVE TIME

This optimized compression technology enables faster transfer of imagery across networks and the Internet, and ultimately reduces the hardware investment required for storage costs.

NO PYRAMIDS OR OVERVIEWS

ECW includes multi-resolution level of detail within the file, eliminating the need to generate or distribute pyramids or overviews.

MOSAICS INSTEAD OF INDIVIDUAL TILES

ECW Mosaics created from 100 or more individual files are much faster to work with than loading individual tiles.

SUPPORTS OPACITY CHANNELS

Mask out background and null data areas, allowing images to overlay other imagery cleanly without showing compression artifacts around the edges.

REDUCE SIZE, RETAIN FULL VISUAL QUALITY

Reduces terabyte-sized files to five percent of their original size, while retaining the image's full visual quality.

LIGHTNING-FAST DISPLAY PERFORMANCE

Lightning-fast display performance means fast zooming, panning, and roaming over large images.

MORE ACCESSIBLE DATA TO USERS

Easily exchange images, thanks to broad industry support for the ECW format. ECW provides the industry's fastest decompression and compression rates, enabling faster processing and transfer of imagery throughout an organization, reducing overall data duplication.

OUTPERFORMS ALTERNATIVE STORAGE FORMATS

Because of extensive format optimizations, expensive hardware requirements generally seen when using JPEG 2000, MrSID, Esri® raster geodatabase or compressed GeoTIFF files are minimized with the same or better results.

COMPARE DATA HANDLING AND PERFORMANCE

AUTOCAD COMMANDS ATTACH OR XREF	ECW
Insertion point for each file to be defined	Georeference insertion points automatically read and used
No transparency settings	Settings available for resolution and opacity sources
Automatic filter for the maximum zoom level	No need for filter or configuration; actual data used
Using IMAGEATTACH: Data remain completely in RAM until AutoCAD is closed. RAM limitation	Loads data dynamically

OPTIONS FOR RASTER IMAGERY USING ECW PLUGIN FOR AUTOCAD

GEOCOMPRESSOR

- Compress your raster data with Hexagon Geospatial GeoCompressor up to the new ECW 3.0 format
- Mosaic multiple images into a single image; update regions of mosaic as needed
- Save the ECW on your local machine or in the network
- Install the free ECW Plugin for AutoCAD and use raster files with hundreds of GB size in AutoCAD

M.APP CHEST

- Upload and compress your raster data with the cloud based Hexagon Geospatial M.App Chest and configure your own ECWP streaming web service (available soon on Hexagon Geospatial Marketplace)
- Install the free ECW Plugin for AutoCAD and use your own data through the ECWP service without the need of buying, maintaining, and running your own web server

ERDAS APOLLO FOR ECWP STREAMING WEB SERVICE

- Distribute massive amounts of imagery to many users from a single server with ERDAS APOLLO
- Save time, bandwidth and infrastructure costs by centralizing all of your disparate data in one single, searchable catalog
- Create your own ECWP streaming web service
- Install the free ECW Plugin for AutoCAD and use your own data through the ECWP service

About GEOSYSTEMS

GEOSYSTEM is a software vendor and service partner with outstanding expertise in remote sensing, photogrammetry, GIS and geospatial data management. As Hexagon Geospatial premium partner in Germany, Austria, and Switzerland, GEOSYSTEMS offers the Power Portfolio, a worldwide leading software for visualization, analysis, deployment, and distribution of geographic data. Based on those products, GEOSYSTEMS develops customer specific solutions and implements tailor-made workflows. Services at GEOSYSTEMS covers workflow streamlining, process orientated consulting, software development, system integration, support, training, updates and maintenance. GEOSYSTEMS is internationally successful for more than 25 years. GEOSYSTEMS is located in Germering near Munich, Germany.

For more information, please call +49 89 894343-0, or visit www.geosystems.de.

About Power Portfolio

The Power Portfolio from Hexagon Geospatial combines the best photogrammetry, remote sensing, GIS and cartography technologies available. Flowing seamlessly from the desktop to server-based solutions, these technologies specialize in data organization, automated geoprocessing, spatial data infrastructure, workflow optimization, web editing, and web mapping. The Provider Suite enables you to comprehensively manage and deliver volumes of geospatial and business data.

About Hexagon Geospatial

Hexagon Geospatial is part of Hexagon (Nasdaq Stockholm: HEXA B; hexagon.com), a leading global provider of information technologies that drive quality and productivity improvements across geospatial and industrial enterprise applications. Learn more at hexagon.com.

